



February 26, 2019

Algonquin Modular Panel Bridge to serve as vehicular bridge during Port of Saint John's expansion

Algonquin offers “Bailey Bridges” for sale and rent — Port of Saint John opts to buy

As part of a major \$205 million West Side Terminals Modernization Project, a heavy-duty Algonquin Modular Panel Bridge will keep the busy Port of Saint John connected during a seven year construction phase and beyond.



Project at a glance:

Project Name: West Side Modernization

Location: Saint John, New Brunswick

Owner: Port of Saint John

Engineer: Hatch, Halifax

Contractor: Alternative Concrete Technologies Ltd

Sector: Urban

Application: Stream Crossing

Product: Algonquin Modular Panel Bridge

Dimensions: Span 39.63 m, Width 35 m

Installation Time: Three weeks

The 40 m crossing will be the only access between the mainland and the container pier. As such, its more robust truss configuration was designed to accommodate all of the heavy container truck traffic while the Rodney Pier is being extended and dredged to make it deeper, stronger and more efficient.

Launching nose and rollers simplified the prefabricated bridge installation

Prior to the tender, the Algonquin engineering team provided concept drawings and support to help the consultant pre-design the foundations.

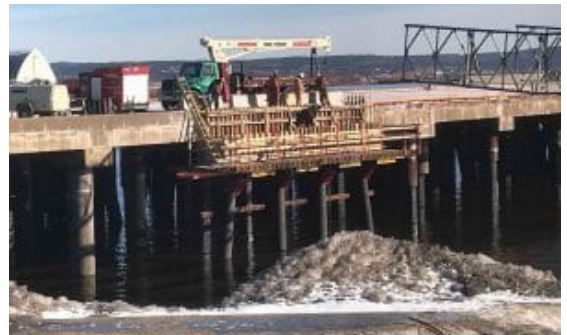
We utilized a mix of inventoried and new components to meet the project's timelines. The winter season assembly and installation was still underway at time of publication, with on-site assistance provided by the Algonquin Team. The use of a launching nose and launch rollers simplified the process and the contractor was impressed with how smoothly the cantilevered launch sequence rolled out.

Although a rental option was also provided, the owner opted to purchase the bridge as they were looking for a 25-year solution — well beyond the current construction phase.

[See all Project Profiles on algonquinbridge.com](http://algonquinbridge.com)



Roller system for cantilevered launch sequence.



Prepared foundation on opposite side as nose module approaches.



Nose module reaching prepared foundation on opposite side.