



# *Connecting communities. All ways.*

- ▶ Modular Bridge Systems
- ▶ Temporary or Permanent
- ▶ Emergency Replacements
- ▶ Custom Prefabricated Bridges
- ▶ Pedestrian Truss Bridges
- ▶ Girder Bridges



[algonquinbridge.com](http://algonquinbridge.com)

## Canadian bridges connecting Canadians

Algonquin Bridge helps keep Canadians connected with versatile Modular Bridge Systems and Custom Prefabricated Bridges for a wide range of applications.

We are a 100% Canadian-owned designer and manufacturer with a 30-year track record of delivering exceptional value in innovative bridging solutions. Our bridges are shipped to locations throughout Canada, including the Arctic, and they are easy to install with local crews and equipment.

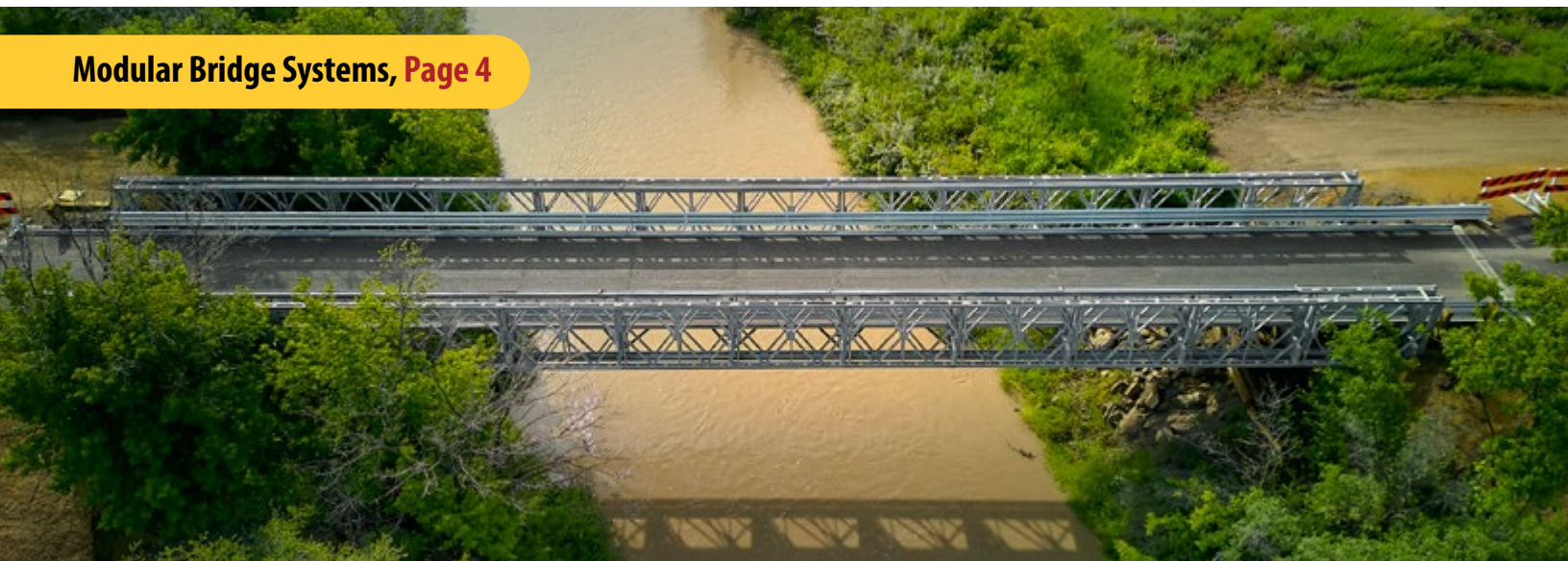
Our full-project-cycle approach (initial scoping, project planning, design, engineering, shipping logistics and on-site assistance) has built our reputation and earned us many repeat customers.



**Applications Gallery, Page 2**



**Modular Bridge Systems, Page 4**



# Resilient, sustainable and dependable

The Algonquin team designs bridges with built-in resilience to climate-change-driven extreme weather, incorporating open-flow spans, higher decks and reinforced abutment systems.

Plus, as a member of The AIL Group of Companies, we are committed to achieving net zero emissions by 2050 and to being a market leader in the solar-assisted manufacturing of low-carbon steel bridging solutions that support biodiversity.

Whatever your bridging requirement, you can be sure that the connection has been made with Algonquin's efficiency and quality built into every bridge. Because we're not just building bridges, we're building relationships.



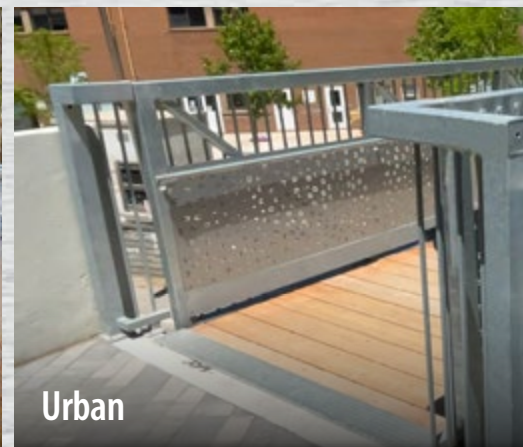
Custom Prefabricated Bridges, [Page 10](#)



Bridge/Abutment Packages, [Page 14](#)

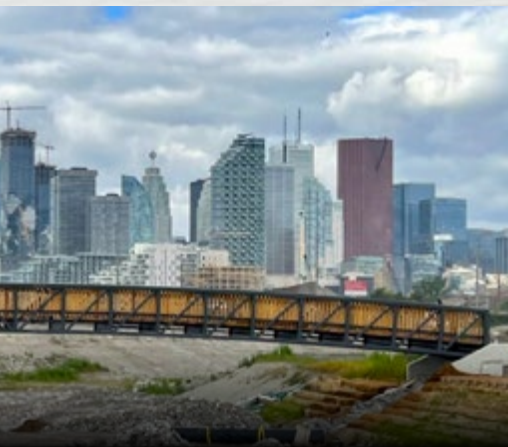
# Efficient bridging solutions for all sectors

From the smallest pedestrian crossing to multi-lane vehicular spans, Algonquin Bridges are connecting communities — all ways. And beyond communities, they are also connecting mine sites, woodland trails, railways, northern access routes, trade corridors, military installations and more. An Algonquin Technical Sales Representative can help you save time and money on your project. The sooner we get involved, the more you may save.



# A bridge for all reasons

- ▶ Arctic & Remote
- ▶ Construction Access
- ▶ Detour
- ▶ Development
- ▶ Emergency
- ▶ Energy
- ▶ Forestry
- ▶ Golf
- ▶ Military
- ▶ Mining
- ▶ Pedestrian
- ▶ Permanent
- ▶ Pipe Support
- ▶ Public Works
- ▶ Rail
- ▶ Rental
- ▶ Seasonal Lift
- ▶ Temporary
- ▶ Trail
- ▶ Transportation
- ▶ Urban
- ▶ Utility
- ▶ Vehicular



Railway



Recreational Trail



Private Development



Northern



*The Algonquin R800 is the only Canadian-made Modular Panel Bridge System.*



## Adaptable and redeployable bridging solutions for virtually any application

### RECOMMENDED FOR

- ▶ Detour Bridges ▶ Resource Road Bridges ▶ Low Volume Roads
- ▶ Emergency Bridge Replacements ▶ Stream Crossings
- ▶ Road or Rail Overpasses ▶ Military Bridges ▶ Permanent Bridges

Algonquin R800 Modular Panel Bridge Systems are innovative and economical bridging solutions for a wide array of permanent or temporary applications.

These Canadian-made bridge systems are inventoried and ready to ship across Canada or internationally. They are easy to handle/assemble and are completely reusable.

Designs can be configured for a wide range of roadway widths up to three lanes. Driving surfaces can be steel deck panels with an epoxy aggregate anti-skid coating, asphalt-ready steel decking or timber.

Whatever your requirements, Algonquin R800 Bridges are resilient, sustainable and dependable bridging solutions.

### Features & Benefits

- ▶ 100% designed and fabricated in Canada
- ▶ Made with over 75% Canadian steel
- ▶ Responsive and secure Canadian supply chain
- ▶ Ready to ship anywhere
- ▶ Permanent or temporary applications
- ▶ Ideal for Northern/Arctic installations
- ▶ Short-term or long-term rental options
- ▶ Able to cantilever launch from one side
- ▶ Uses 3.048 m (10') pinned panels
- ▶ Clear spans in excess of 82.3 m (270')
- ▶ Standard roadway widths of 3.15 m (10.2') to 10.5 m (34.5')

**PERMANENT OR TEMPORARY**



Napadogan, NB

TAKE A 360°  
VIDEO TOUR



Ready to ship anywhere for permanent or temporary applications, rentals and emergency replacements.



**IN STOCK & READY TO SHIP**



**RENT OR BUY**



## Rental Bridges

We stock a wide range of Algonquin Modular Panel Bridge Systems for both short- and long-term rentals. These pre-engineered bridges have been proven many times in rental applications. Local teams with minimal experience can easily assemble them on site and they can be either lifted into place or cantilever launched from one side.

### The benefits of renting

- ▶ Keep costs to timeframe of need
- ▶ Free up capital for other purposes
- ▶ No maintenance or storage expenses
- ▶ Improve project balance sheet and ROI

### The benefits of renting from Algonquin

- ▶ Canada-wide distribution and support
- ▶ Professional Engineer stamped drawings
- ▶ In-house engineering and design
- ▶ Dependable field service



24/7 TOLL-FREE HOTLINE  
1-844-274-3535



## Rapid Response Emergency Bridges

Increasingly, severe weather events are resulting in bridge failures and washouts. When faced with an emergency bridge replacement, time is of the essence. You need a proven partner you can rely on.

As Canada's go-to emergency bridging specialist, Algonquin Bridge is ready to respond with available inventories of Algonquin Modular Panel Bridge Systems, in-house engineering and reliable field service.

These pre-engineered bridges are ideally suited for the rapid replacement of damaged bridges or bridge washouts and have proven themselves many times in emergency situations.



TAKE A 360°  
VIDEO TOUR

Autoroute 20, Notre-Dame-du-Bon-Conseil, QC

Our Modular Panel Bridges are ready to ship and our engineers are ready to support you on configuration and installation.



Ottawa, ON

TAKE A 360°  
VIDEO TOUR



*The Algonquin T1000 is the only Canadian-made Modular Bolted Truss Bridge System.*



Pre-cambered side trusses



Can also be cantilever launched



T1000 Bolted Bowstring Truss

## Innovative, economical solutions for heavy-duty applications

RECOMMENDED FOR

- ▶ Permanent Bridges ▶ Higher Volume Roads
- ▶ Heavy-Duty Applications ▶ River Crossings
- ▶ Road or Rail Overpasses ▶ Bridge Replacements

Algonquin T1000 Modular Bolted Truss Bridge Systems are innovative and economical bridging solutions for heavy-duty applications.

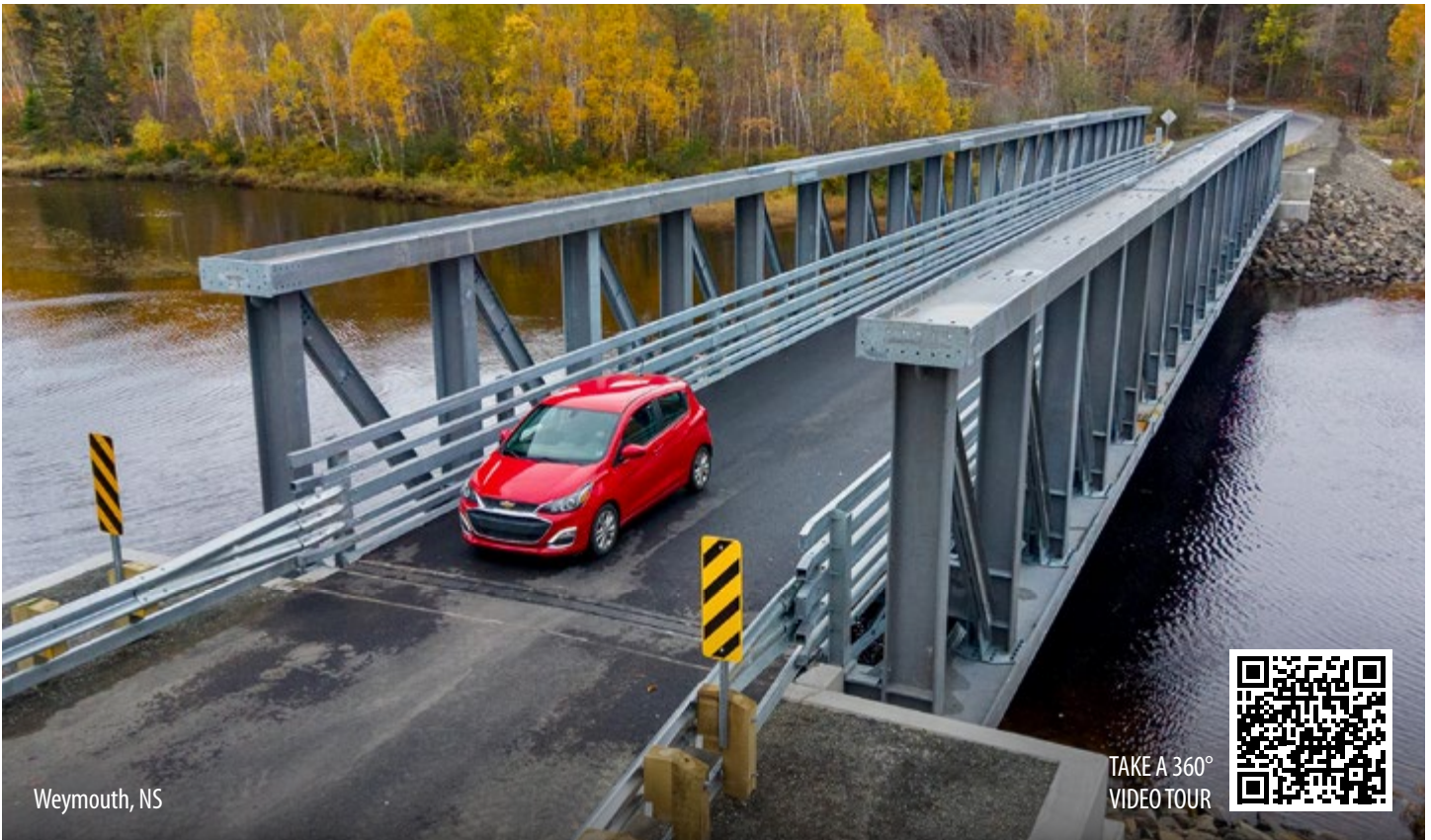
Algonquin T1000 Modular Bolted Truss Bridges use 9 m (30') long prefabricated truss sections that are bolted to the top and bottom chord members to form pre-cambered side trusses that carry the applied loads and counter dead load deflection.

Designs can be configured for a wide range of roadway widths up to three lanes. Driving surfaces can be steel deck panels with an epoxy aggregate anti-skid coating, asphalt-ready steel decking or timber.

Whatever your requirements, Algonquin T1000 Bridges are resilient, sustainable and dependable bridging solutions.

### Features & Benefits

- ▶ 100% designed and fabricated in Canada
- ▶ Responsive and secure Canadian supply chain
- ▶ Ideal for Northern/Arctic installations
- ▶ Able to cantilever launch from one side
- ▶ Clear spans in excess of 100.6 m (330')
- ▶ Standard roadway widths of 3.15 m (10.2') to 10.5 m (34.5')
- ▶ Internal or cantilevered walkway

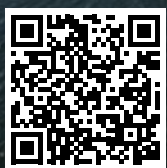


Weymouth, NS

TAKE A 360°  
VIDEO TOUR



Pre-cambered side trusses carry the applied loads and counter dead load deflection.



TAKE A 360°  
VIDEO TOUR

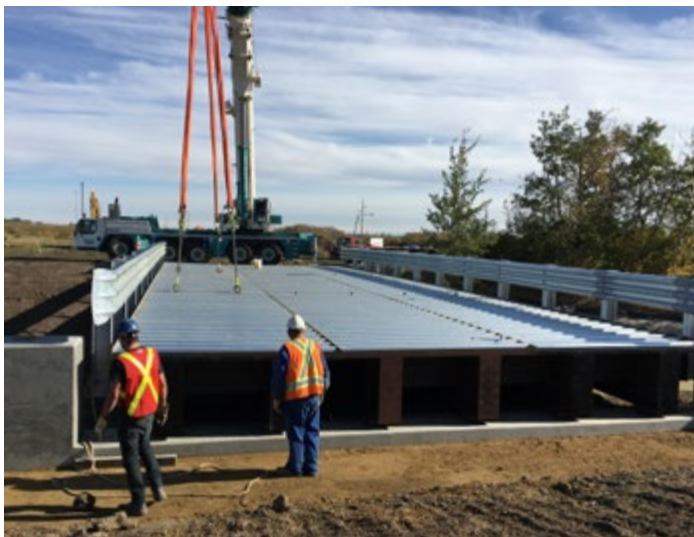
Mira Gut, NS

## Strong, lightweight Steel Girder Bridges to accelerate your project

Strong, yet lightweight, Steel Girder Bridges from Algonquin Bridge ship and install quickly on any foundation type and without the need for poured concrete or specialized bridge construction companies, making them perfect for accelerated bridge construction.

Algonquin Vehicular Girder Bridges can reach spans up to 27.4 m (90') in single or multiple lane configurations with typical sections being 2.4 m (7.9') wide.

Algonquin's Steel Girder Bridges can often be installed in one day using local crews and on-hand equipment, saving you time and money in accelerated bridge construction projects.



### Features & Benefits

- ▶ Strong: able to withstand heavy-duty loading
- ▶ Open design, no overhead clearance restrictions
- ▶ Permanent or temporary applications
- ▶ Pre-assembled in factory to ensure smooth assembly and setting
- ▶ Easy installation, even in rugged terrain
- ▶ Accelerated installation vs. traditional site-built structures
- ▶ Shorter bridges can be installed with excavators or wheel loaders
- ▶ Use local contractors or your own crew
- ▶ Steel decking, bearing plates and pads

### Available Options

- ▶ Steel deck wearing surfaces: Asphalt, poured or precast concrete, epoxy aggregate anti-skid coating, timber or gravel
- ▶ Finishes: Naturally weathering, painted or galvanized
- ▶ Sidewalks and utility corridors
- ▶ Curb or rail system
- ▶ Steel backwall systems
- ▶ MSE Retaining Wall or Bolt-A-Bin abutments
- ▶ Skewed ends to suit site
- ▶ Added faux trusses to enhance design

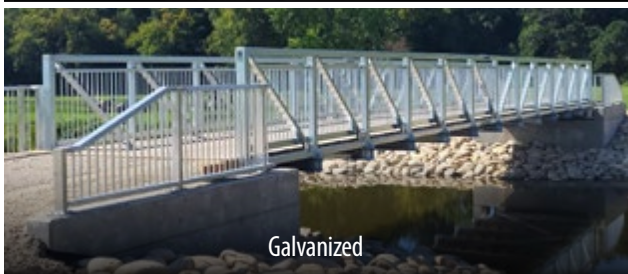
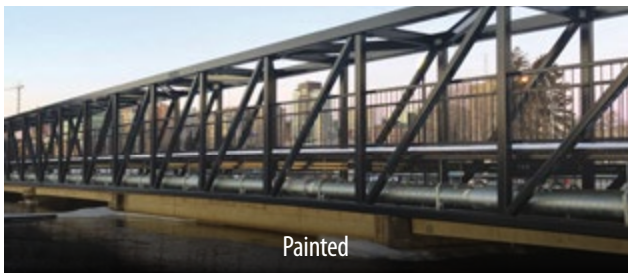
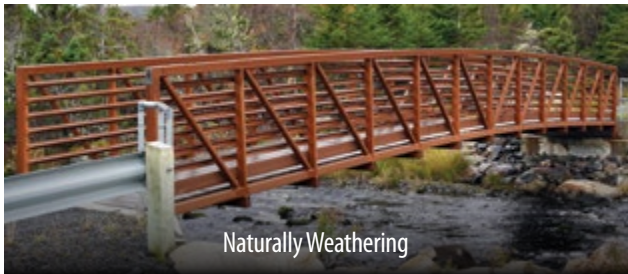


Algonquin Bridge designs and manufactures custom prefabricated bridging solutions for many vehicular applications.



## Custom Prefabricated Pedestrian/ Trail Bridges tailored to your site and application

*Our Custom Prefabricated Bridges are available in a variety of finishes.*



### RECOMMENDED FOR

- ▶ Road or Rail Crossings ▶ Enclosed Pedways ▶ Stream Crossings
- ▶ Recreational Trails ▶ Active Transportation Routes
- ▶ Golf Courses ▶ Private Developments ▶ Utility Bridges

Pre-engineered Pedestrian/Trail Bridges from Algonquin have been a prime choice for many municipalities, transportation authorities, light rail companies, golf courses and developers for many decades.

From the smallest Trail Bridge to expansive enclosed urban pedways, we have prefabricated pedestrian bridge solutions for virtually every application, including road and light rail crossings, highway overpasses, stream crossings and many more.

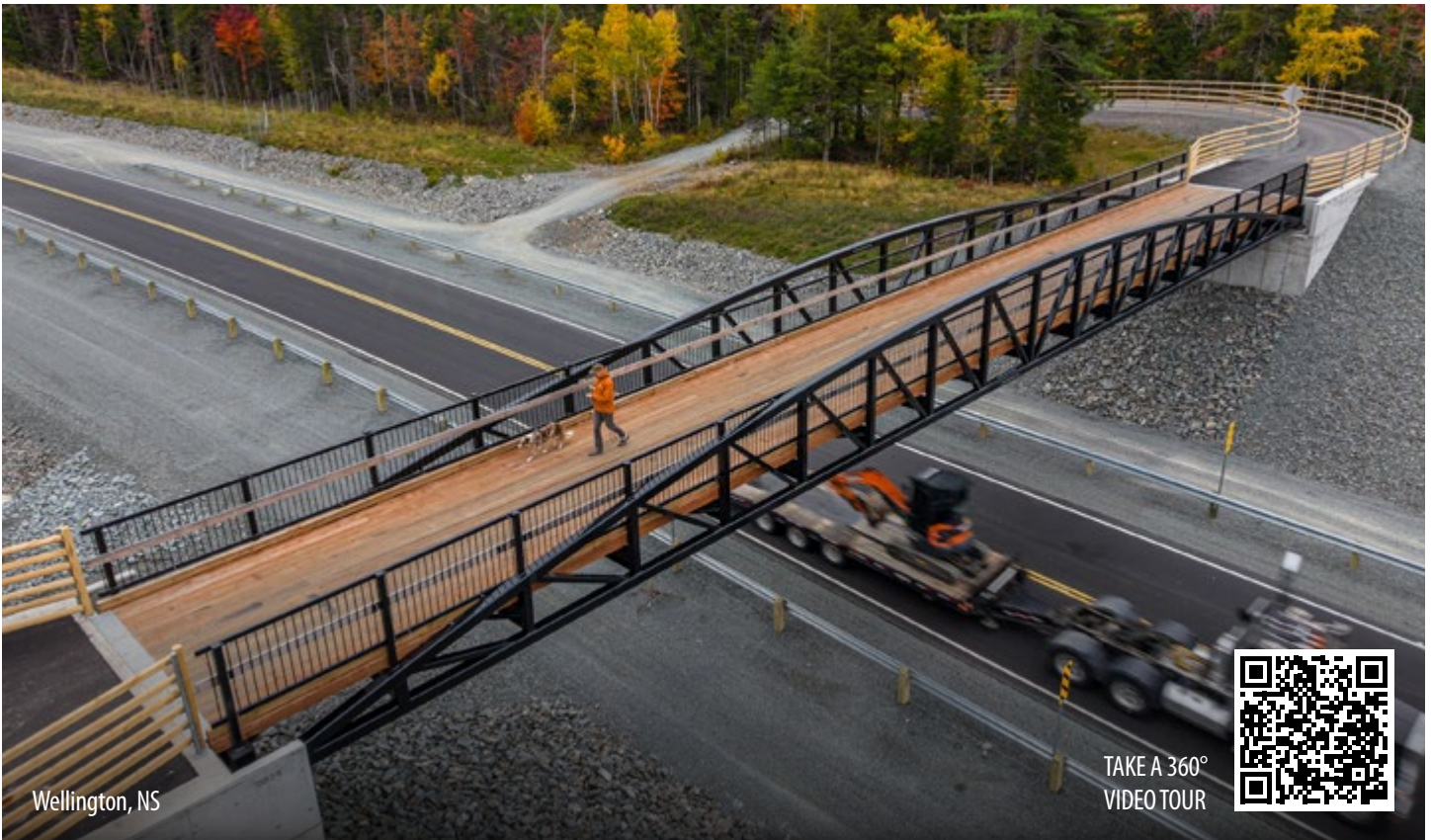
Algonquin Pedestrian/Trail Bridges can often be installed in just a few hours using local crews and on-hand equipment, saving you time and money in the process.

### Features & Benefits

- ▶ Pre-assembled in factory to ensure smooth assembly and setting
- ▶ Easy installation, even in rugged terrain
- ▶ Shorter road closure times
- ▶ Clear spans of up to 80 m (262')

### Available Options

- ▶ Truss Styles: Pratt, Warren or Howe
- ▶ Finishes: Naturally weathering, painted or galvanized
- ▶ Decking: Softwood, hardwood, composite, bar grating, cast-in-place concrete or epoxy aggregate anti-skid coating
- ▶ Safety Systems and Attachments: Horizontal rails, vertical pickets, galvanized steel pipe handrails, wood rub rails, mesh panels or fencing, architectural lighting
- ▶ Standing seam roofing on pedways



## Discover the simplicity of Custom Prefabricated Pedestrian/Trail Bridges from Algonquin Bridge.



# THE ALGONQUIN BRIDGE SYSTEM

## Bridge Options

- ▶ Algonquin R800 Modular Panel Bridge System
- ▶ Algonquin T1000 Modular Bolted Truss Bridge System
- ▶ Custom Prefabricated Vehicular or Pedestrian Bridges

## Abutment Options

- ▶ Bolt-A-Bin (Cellular Bin Style)
- ▶ MSE Retaining Wall Systems
  - Wire Walls with Track-Strip Soil Reinforcement
  - Precast Panel Walls with Grid-Strip Soil Reinforcement
- ▶ Timber\*

## Decking Options

- ▶ Steel deck panels with an epoxy aggregate anti-skid coating
- ▶ Asphalt-ready steel decking
- ▶ Timber

\* Some elements may be designed and supplied by others.

# Package it up with the Algonquin Bridge System.

Save time and money on your next bridging project by asking us to supply your bridge as a complete package.

## Bearing Pad Options

- ▶ Concrete\*
- ▶ Precast Concrete Sleeper Slabs\*
- ▶ Timber (for temporary bridges)\*

## Backwall Options

- ▶ Timber (Untreated or Pressure-Treated)
- ▶ Corrugated Steel (Bolt-A-Plate)
- ▶ Precast Concrete\*
- ▶ Cast-in-Place Concrete\*

## Pier/Tower Options

- ▶ Concrete Pier\*
- ▶ Modular Bridge System Components

## Guiderail Options

- ▶ Flexbeam and Thrie-Beam Guiderail Components
- ▶ Approach Rails, TL-4 Parapets, Transition Rails and Michigan Shoes\*

The information and suggested applications in this brochure are accurate and correct to the best of our knowledge, and are intended for general information purposes only. These general guidelines are not intended to be relied upon as final specifications, and we do not guarantee specific results for any particular purpose. We strongly recommend consultation with an Algonquin Bridge Technical Sales Representative before making any design and purchasing decisions.



Wayne, AB



Lindsay, ON



CALL OUR 24/7 TOLL-FREE NUMBER: 1-844-274-3535

## Made-in-Canada quality you can depend on

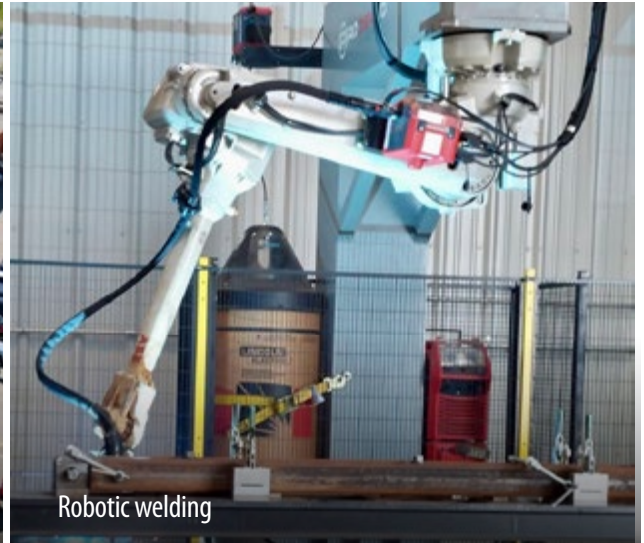
Our bridges are designed and manufactured to precise tolerances and the highest quality assurance standards in the controlled environment of our modern factory in Thorndale, Ontario.

## "Greener" bridging solutions

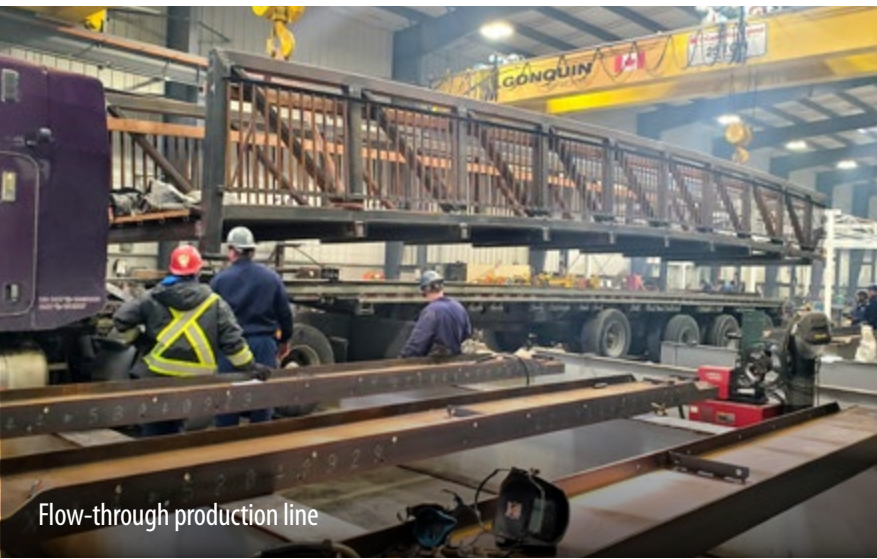
- ▶ Committed to Net Zero by 2050
- ▶ Solar-assisted manufacturing
- ▶ Smaller carbon footprint than concrete
- ▶ Recycled and recyclable steel



Solar-assisted manufacturing



Robotic welding



Flow-through production line



Dynamic load testing at our facility



### Algonquin Bridge

Toll-Free: 1-844-274-3535

On the web: [algonquinbridge.com](http://algonquinbridge.com)

121 Gerald Parkway  
Thorndale, Ontario  
NOM 2P0

Algonquin Bridge Limited is a member of  
THE AIL GROUP OF COMPANIES

