



September 20, 2020

Pair of multi-span Algonquin Modular Panel Detour Bridges used on NBDTI replacement project at Coles Island

Highway 10 skips across picturesque Coles Island thanks to a pair of iconic double arch steel truss bridges less than a kilometre apart. Unfortunately, these old bridges were in dire need of replacement. As part of the New Brunswick Department of Transportation and Infrastructure's (NBDTI's) replacement plan, Algonquin Bridge was selected to supply a pair of triple-span detour bridges for the duration of the project.



Project at a glance:

Project Name: Coles Island Detour Bridges

Location: Highway 10 at Coles Island

Owner: New Brunswick Department of Transportation and Infrastructure (NBDTI)

Consultant: Eastern Designers & Company Limited

Contractor: Caldwell & Ross Ltd.

Sector: Transportation

Application: Detour Bridge, Stream Crossing

Product: Two Algonquin Modular Panel Bridges

North Bridge Dimensions: Multi-Span 146.3 m (three equal sections), Width 4.2 m

South Bridge Dimensions: Multi-Span 128.0 m (three equal sections), Width 4.2 m

Installation Time: Two months

“Bailey Bridge” style detour bridges reached up to 146.3 m

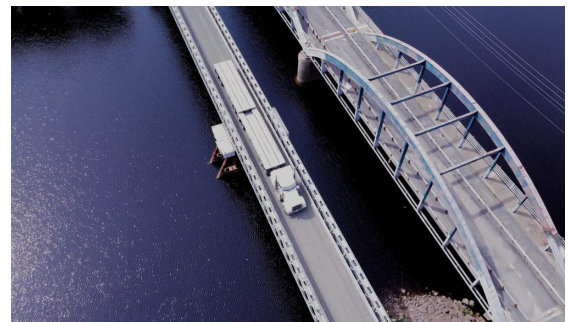
Due to the total lengths of the Algonquin Modular Panel Bridges (146.3 m and 128.0 m), each bridge had to be configured in three equal spans over support piers. The Algonquin team provided the contractor, Caldwell & Ross Ltd., with a custom cantilever launch procedure and a jacking plan, which detailed the optimum jacking points and their respective capacity limits.

The client was pleased that the installation went smoothly and was completed well before they needed to open the detours.

Discover the many benefits of renting bridges from Algonquin

Algonquin Bridge maintains an inventory of Modular Panel Bridge Systems to rent for both short-term and long-term temporary bridge applications. These pre-engineered “Bailey Bridge” style bridges have been proven to be effective many times in rental applications. Local teams with minimal experience can easily assemble these temporary bridges on-site, and they can be either crane-lifted into place or cantilever-launched from one side. Further benefits include:

- Keeping costs to timeframe of need
- Freeing up capital for other purposes
- No maintenance or storage expenses
- Improving project balance sheet and ROI
- A wide range of bridging options
- Canada-wide distribution and support
- In-house engineering and design
- Dependable field service
- Professional Engineer stamped drawings



Take a 360° drone-video tour
of this project

See all Project Profiles on algonquinbridge.com