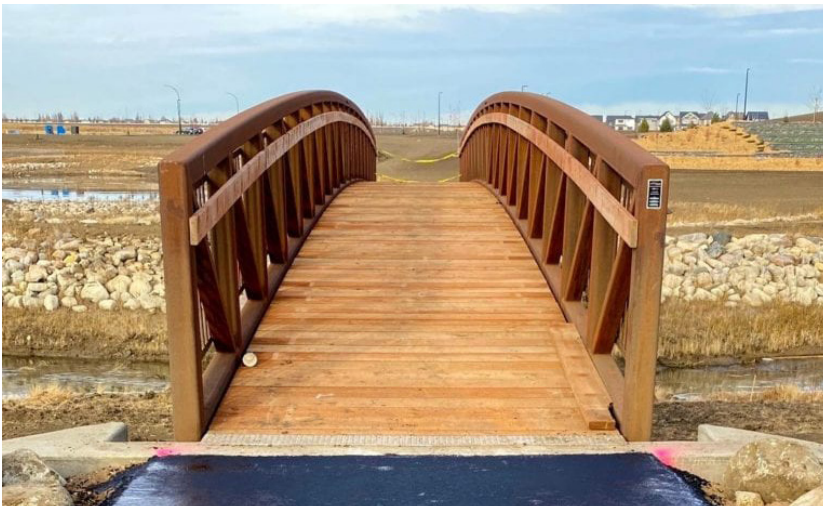




March 16, 2021

## Algonquin Pedestrian Bridge drops into Core of new Saskatoon residential development

Brighton is a unique community taking shape in the east end of Saskatoon amidst hundreds of acres of natural beauty and water features. Algonquin Bridge designed and supplied a 30 m pedestrian bridge for the development's Core Park area. Located near the amphitheatre, the crossing is a vital part of Brighton's active transportation trail network.



### Project at a glance:

**Project Name:** Brighton Core Park Pedestrian Bridge

**Location:** Saskatoon, Saskatchewan

**Owner:** Dream Developments

**Owner:** City of Saskatoon

**Consultant:** Stantec

**Construction Manager:** Wilco Southwest

**Sector:** Private Development, Urban

**Application:** Stream Crossing

**Product:** Pedestrian Bridge

**Dimensions:** Span 30 m, Deck Width 2.4 m

**Installation Time:** One day



## **Pedestrian bridge design was tailored to the site**

Like many projects, this one had a longer budget/tender/design cycle in which we worked very closely with the developer and contractor to ensure that our design was value engineered to be best suited to the specific site.

We were originally contacted in 2015 by Dream Developments to provide a preliminary budget and design. In the 2019 tendering process, we worked very closely with the Construction Manager, Wilco Southwest, to ensure that our bridge design was fully optimized for the site. This included integration with a preliminary boardwalk design. We identified some key cost savings if the dimensions of the boardwalk and bridge were to be adjusted. Our bid was selected.

## **Prefabricated bridge delivered in two sections and assembled on-site**

By having a clear scope and signed IFC drawings at the award stage of the contract, the manufacturing and delivery milestones were easily met. The contract was awarded in November of 2019 and the bridge was delivered in two sections in March of 2020. Due to Covid-19 restrictions, the actual installation of the bridge did not take place until the fall of 2020.

The bridge's graceful arc, naturally weathering steel finish and wood decking complement Brighton's focus on natural beauty.

Our second prefabricated bridge project for Dream Developments Algonquin Bridge also designed and supplied a large Pedestrian Utility Bridge for Dream Development's Zibi project in downtown Ottawa.

**See all Project Profiles on [algonquinbridge.com](https://algonquinbridge.com)**

### **Algonquin Bridge**

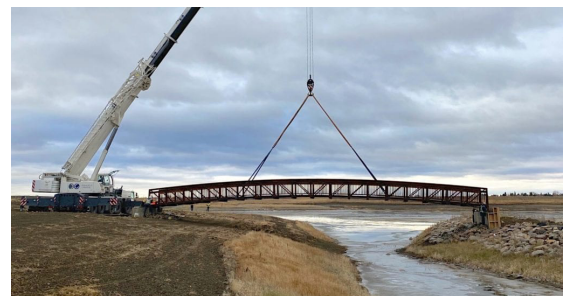
121 Gerald Parkway  
Thorndale, ON N0M 2P0  
1-226-213-4707  
[algonquinbridge.com](https://algonquinbridge.com)



Pedestrian Bridge delivered in two sections and assembled on-site



Pedestrian Bridge installed near Core Park's amphitheatre



Pedestrian Bridge assembled and placed in one day



Pedestrian Bridge design integrates with boardwalk