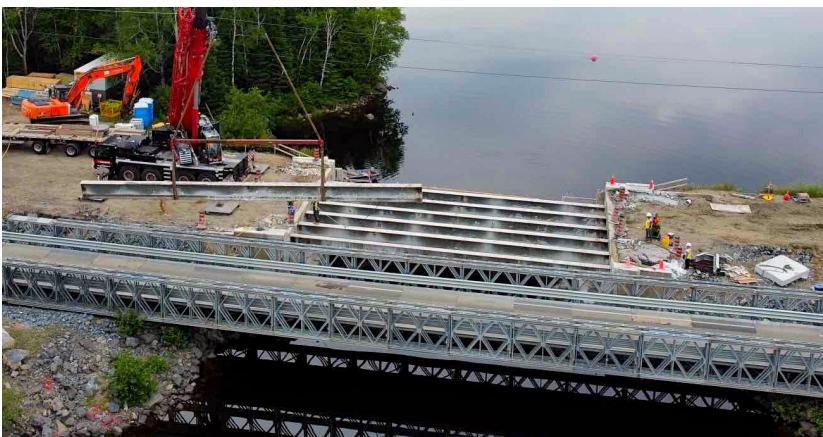




November 2, 2021

## Algonquin Rental Detour Bridge to serve in two bridge-replacement projects along Northern Ontario's Route 101

A redeployable rental bridge system from Algonquin Bridge is going to serve double duty in two sequential bridge-replacement projects for the Ministry of Transportation Ontario (MTO) along Highway 101, north of Sudbury.



### Project at a glance:

**Project Name:** Sideburned Lake Rental Bridge

**Location:** Township of Chapleau, Ontario

**Owner:** Ministry of Transportation Ontario (MTO)

**Consultant:** McIntosh Perry

**Contractor:** Eiffage Canada

**Sector:** Transportation

**Application:** Rental Bridges

**Product:** Algonquin Modular Panel Bridge

**Dimensions:** Span 51.83 m, width 4.2 m

**Installation Time:** 4 weeks for assembly, installation and decking

The projects are all being carried out by Eiffage Canada, with the first deployment for the Algonquin Modular Panel Bridge System at Sideburned Lake in the Township of Chapleau — about halfway between Timmins and Wawa.

### **Detour bridge assembled on tight site along busy highway**

This is the main highway for this area and it is heavily travelled. The assembly/launch area for the rental bridge was rather narrow, so we worked with the Eiffage team to prepare the area and fine-tune the logistics of the assembly and launch work. We coordinated several conference calls with them and we had a site advisor on-site to assist and ensure everything went smoothly.

### **Rental bridge to be redeployed at another location for the next building season**

There were some challenges, but everyone worked together to get the project completed and Eiffage was pleased to get the job done on time. The bridge system will be dismantled and redeployed at Nemegosenda River for the next building season.



**See all Project Profiles on [algonquinbridge.com](http://algonquinbridge.com)**